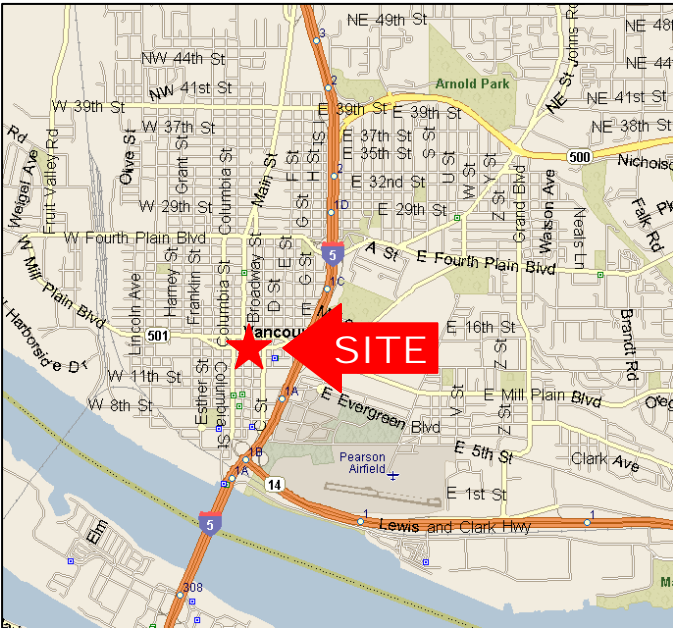


100 E. 13TH STREET

Downtown Vancouver, Washington



LOCATION/ACCESS:

Downtown Vancouver, Washington USA
Corner of E. 13th & Main Street in the heart of the downtown business district.

AVAILABILITY:

First Floor: All or a portion can be one or more suites

Suite 115 – 139 SF

Suite 1305 – 1,653 SF

Suite 111 – 1,693 SF

Lower Daylight Level: Can be demised into two suites

Suite 20/30 – 468 SF

USE:

Office / Medical/ Professional Services

PARKING:

10 On-site Parking Stalls

RENTAL RATE:

\$17.00/SF, per year; Full Service, plus on-site parking

FOR LEASE

For More Information, Contact:



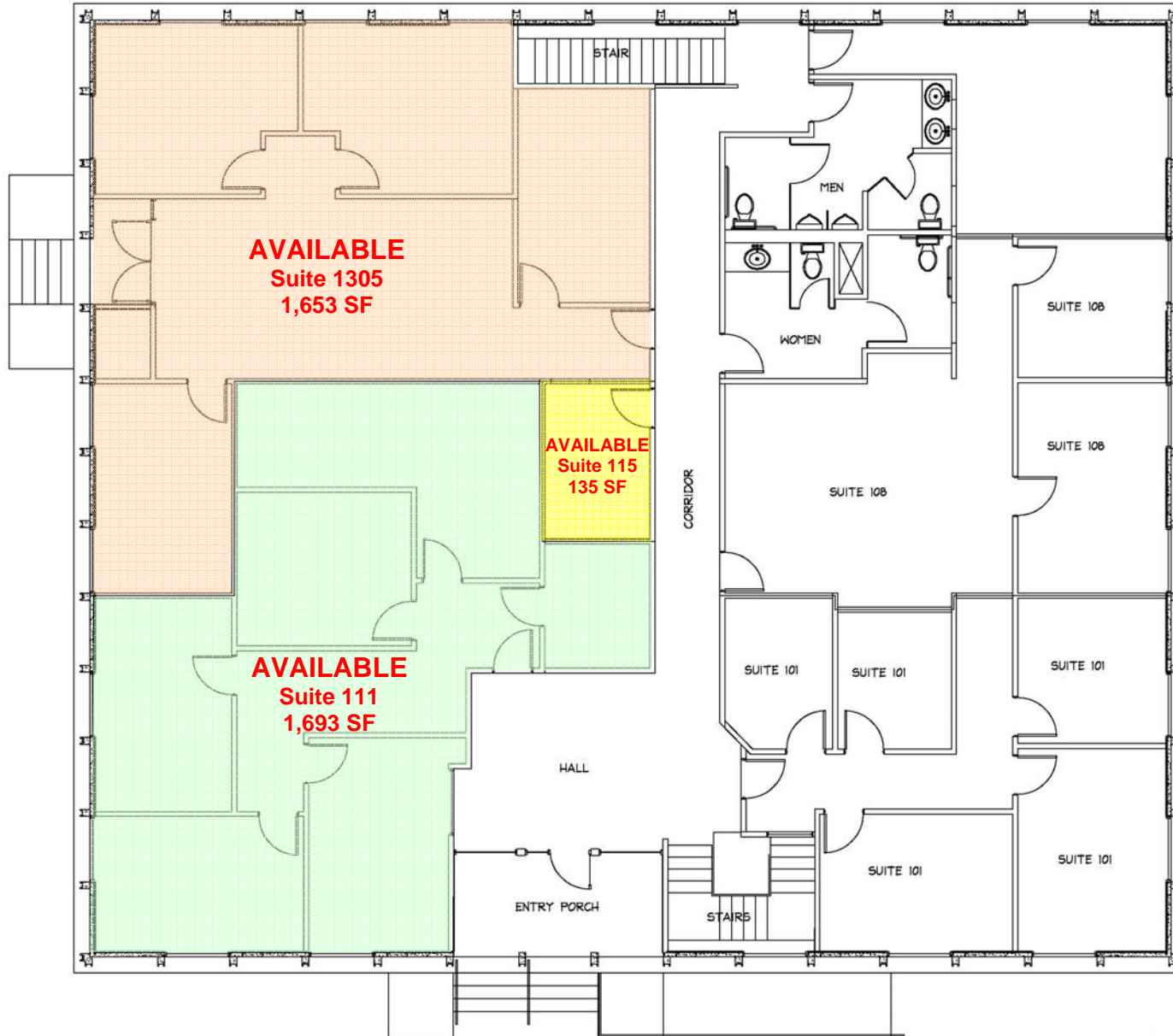
KC FULLER
(360) 750-5595 ext. 16
kfuller@ef-inc.com

501 SE Columbia Shores Blvd., Suite 400 • Vancouver, WA 98661 • (360) 750-5595 • fax (360) 750-5594

This statement with the information it contains is given with the understanding that all the negotiations relating to the purchase, rental or leasing of the property described above shall be conducted through this office. The above information, while not guaranteed, has been secured from sources we believe to be reliable.

100 E. 13TH STREET

Downtown Vancouver, Washington



100 E. 13TH STREET

Downtown Vancouver, Washington

