



MELVIN MARK BROKERAGE | CAPITAL GROUP | CONSTRUCTION | DEVELOPMENT

FOR
LEASE

MCGILLIVRAY PLACE

16703 SE McGillivray Boulevard, Vancouver, Washington 98683

PROPERTY INFORMATION

- Up to 7,006 SF available (divisible)
- Class A office in excellent location
- Beautifully designed and managed
- New lobby and common area improvements
- 4:1,000 parking ratio
- Easy freeway access
- Retail services and restaurants nearby



FOR MORE INFORMATION:

Tim Parker
503.546.4537
tparker@melvinmark.com

Don Drake
503.546.4527
ddrake@melvinmark.com



MELVIN MARK BROKERAGE | CAPITAL GROUP | CONSTRUCTION | DEVELOPMENT

FOR
LEASE

MCGILLIVRAY PLACE

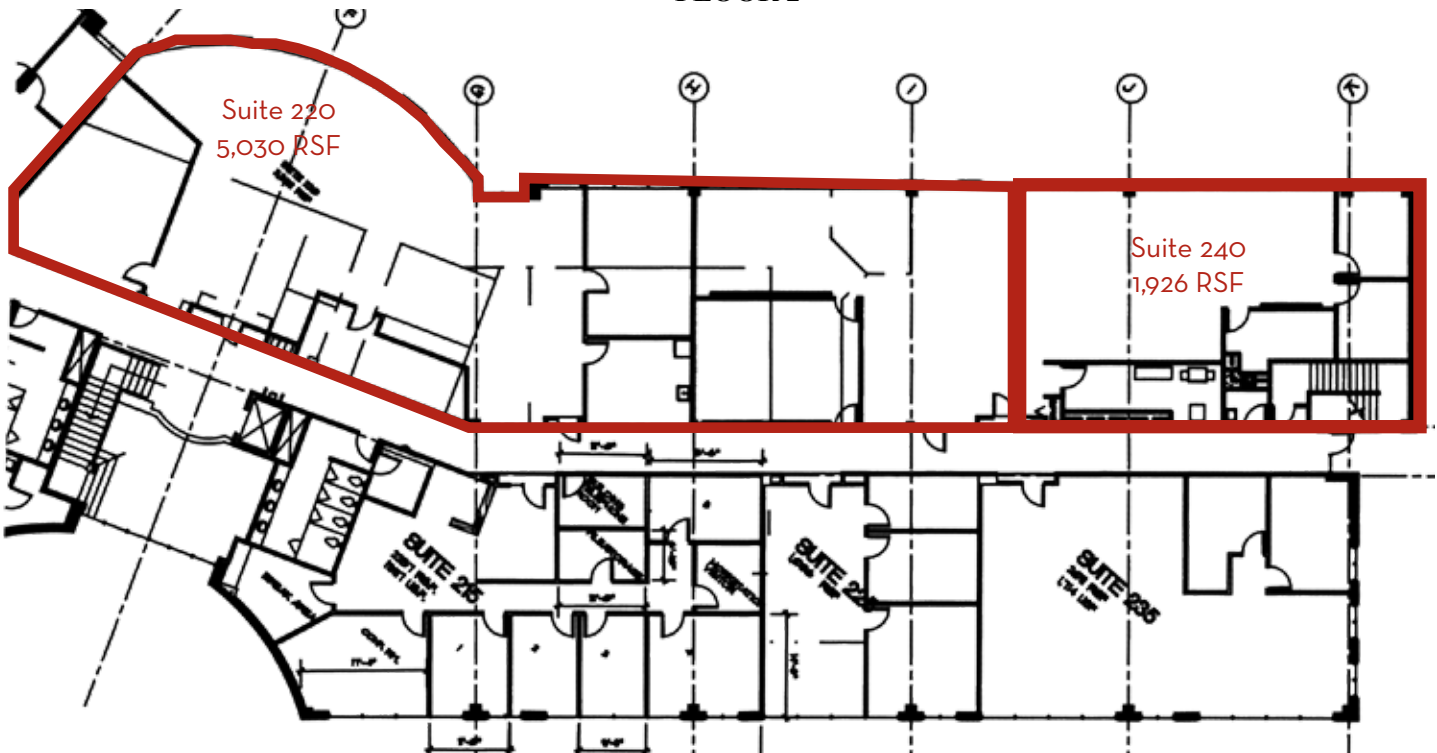
16703 SE McGillivray Boulevard, Vancouver, Washington 98683

CURRENT AVAILABILITY

- Suite 220: 5,030 RSF
- Suite 240: 1,926 RSF
- \$19.00/SF full service



FLOOR 2



All information should be verified prior to purchase or lease.

FOR MORE INFORMATION:

Tim Parker
503.546.4537
tparker@melvinmark.com

Don Drake
503.546.4527
ddrake@melvinmark.com