

FOR LEASE > PROMENADE BUILDING

Office Space

421 HIGH STREET OREGON CITY, OREGON 97045



Views from Back of Property



Contact

JIM EDWARDS
+1 503 499 0072
PORTLAND, OREGON
jim.edwards@colliers.com

COLLIERS INTERNATIONAL
601 SW Second Avenue
Suite 1950
Portland, OR 97204
www.colliers.com

Accelerating success.

FOR LEASE > PROMENADE BUILDING



Office Space

421 HIGH STREET OREGON CITY, OREGON 97045

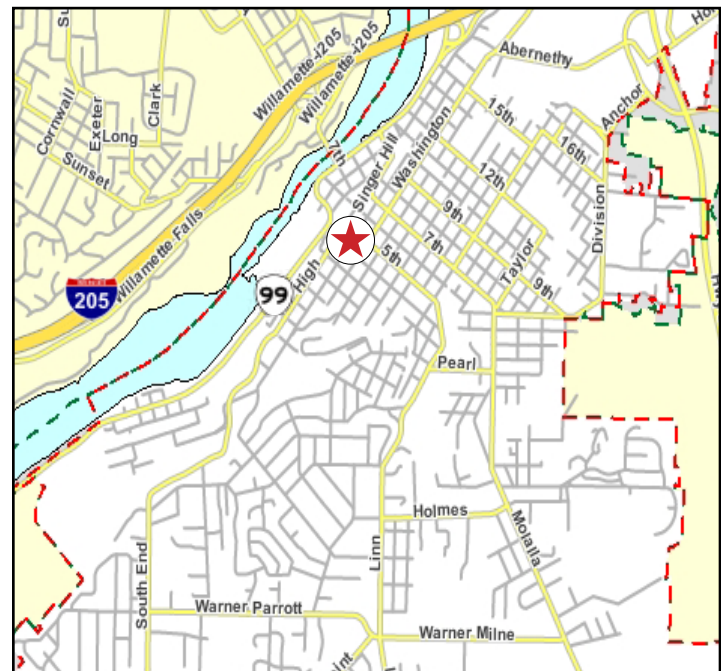


The Building

- > 13,561 Total Gross SF
- > View office space overlooking historic downtown
- > High parking ratio of 5.67/1000
- > Availabilities ranging from 125 SF to 1,389 SF

Location

- > Walking distance to Clackamas County Courthouse
- > Adjoins City Park and Overlook Path
- > Near elevator to downtown Oregon City
- > Minutes from Highway 99 and Interstate 205



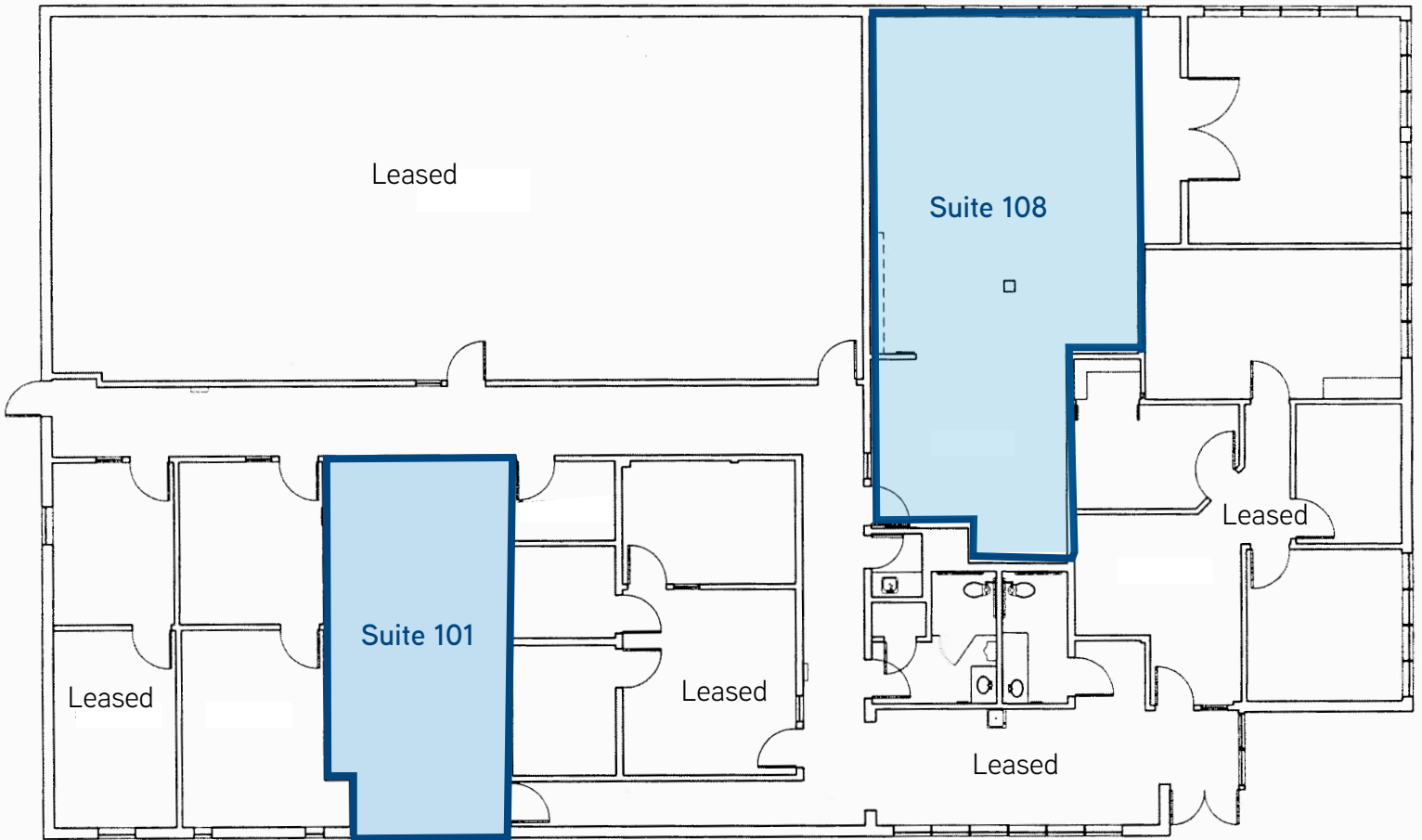
JIM EDWARDS
+1 503 499 0072
PORTLAND, OREGON
jim.edwards@colliers.com

COLLIERS INTERNATIONAL
601 SW Second Avenue
Suite 1950
Portland, Oregon 97204
www.colliers.com

Floor Plan & Availability > Floor 1

Available Now

Suite	SF	Monthly Rental Rate	Rate / SF / Year
101	460	\$ 843	\$22.00
108	1,389	\$ 2,026	\$17.50



JIM EDWARDS
+1 503 499 0072
PORTLAND, OREGON
jim.edwards@colliers.com

COLLIERS INTERNATIONAL
601 SW Second Avenue
Suite 1950
Portland, Oregon 97204
www.colliers.com

Floor Plan & Availability > Floor 2

Available Now

Suite	SF	Monthly Rental Rate	Rate / SF / Year
212	125	\$ 300	\$ NA
220	1,070	\$1,560	\$17.50

*Suite 205 is divisible

