

157TH PLAZA AT SIFTON COMMERCE CENTER



15710 NE 65TH STREET • VANCOUVER, WA 98682

157TH PLAZA is the first building to be constructed and certified in accordance with BPA's new Energy Smart Design program providing Class "A" Medical/Office space either to lease or with ownership opportunities in one of Vancouver's most energy efficient buildings.

SQUARE FOOTAGE

AVAILABLE: From 1,000 SF to 25,000 SF

RENTAL RATE: \$24.00/Sq. Ft., Per Year, Full Service

TERM: Five (5) Year Minimum

PARKING RATIO: 5.0 / 1,000



Building features include: Sun Shades, TPO Roofing, Digital Addressable Lighting, Architectural Block Construction and "Pervious" Pavement.

For More Information, Contact:

ADAM D. ROSELLI, CCIM
(360) 750-5595 ext. 15
aroselli@ef-inc.com

DEBORAH EWING
(360) 750-5595 ext. 13
dewing@ef-inc.com

BYRON ROSELLI
(360) 750-5595 ext. 14
broselli@ef-inc.com

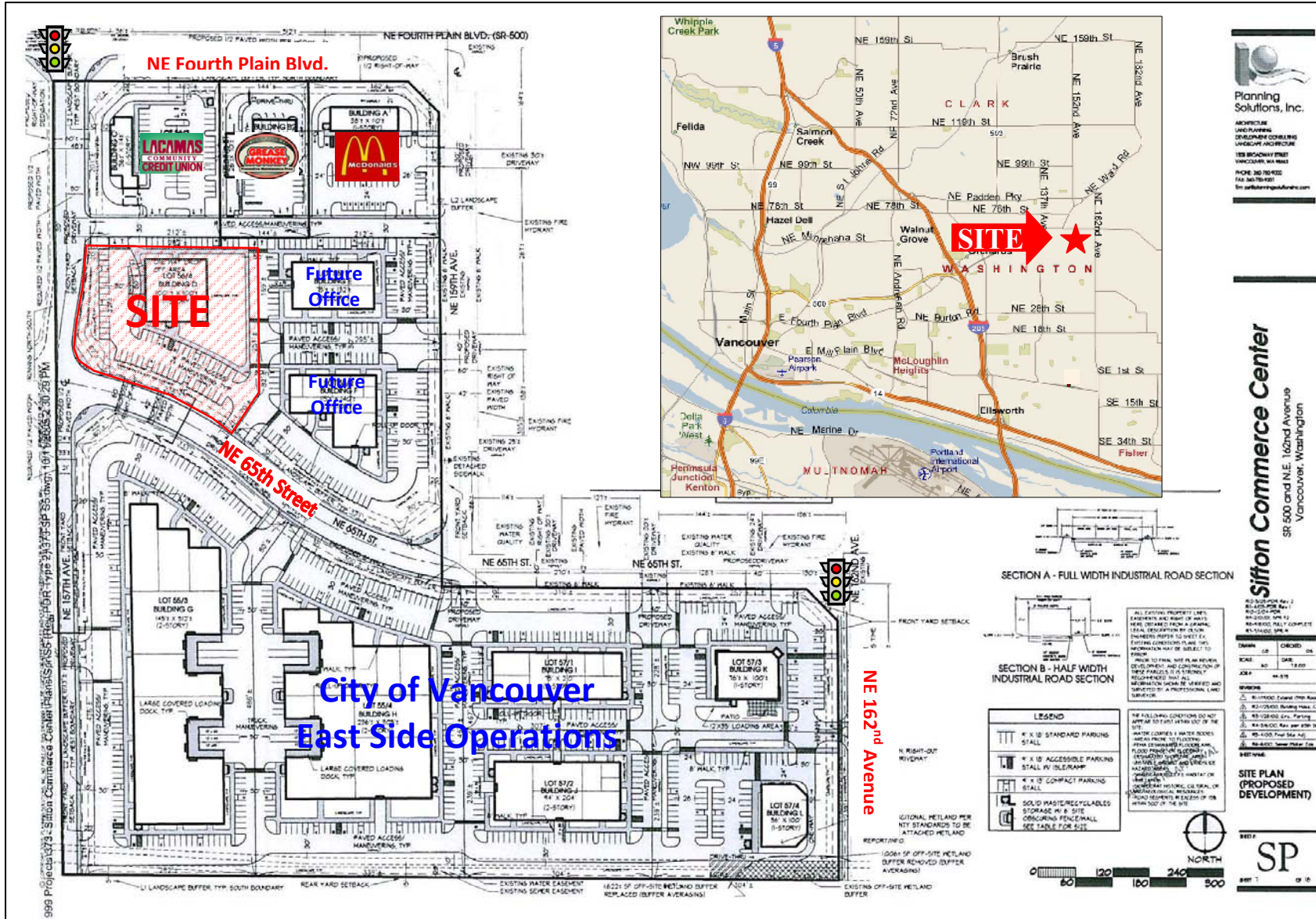


501 SE Columbia Shores Blvd., Suite 400 • Vancouver, WA 98661 • (360) 750-5595 • fax (360) 750-5594

This statement with the information it contains is given with the understanding that all the negotiations relating to the purchase, rental or leasing of the property described above shall be conducted through this office. The above information, while not guaranteed, has been secured from sources we believe to be reliable.

**F
O
R
L
E
A
S
E**

157TH PLAZA AT SIFTON COMMERCE CENTER VANCOUVER, WASHINGTON



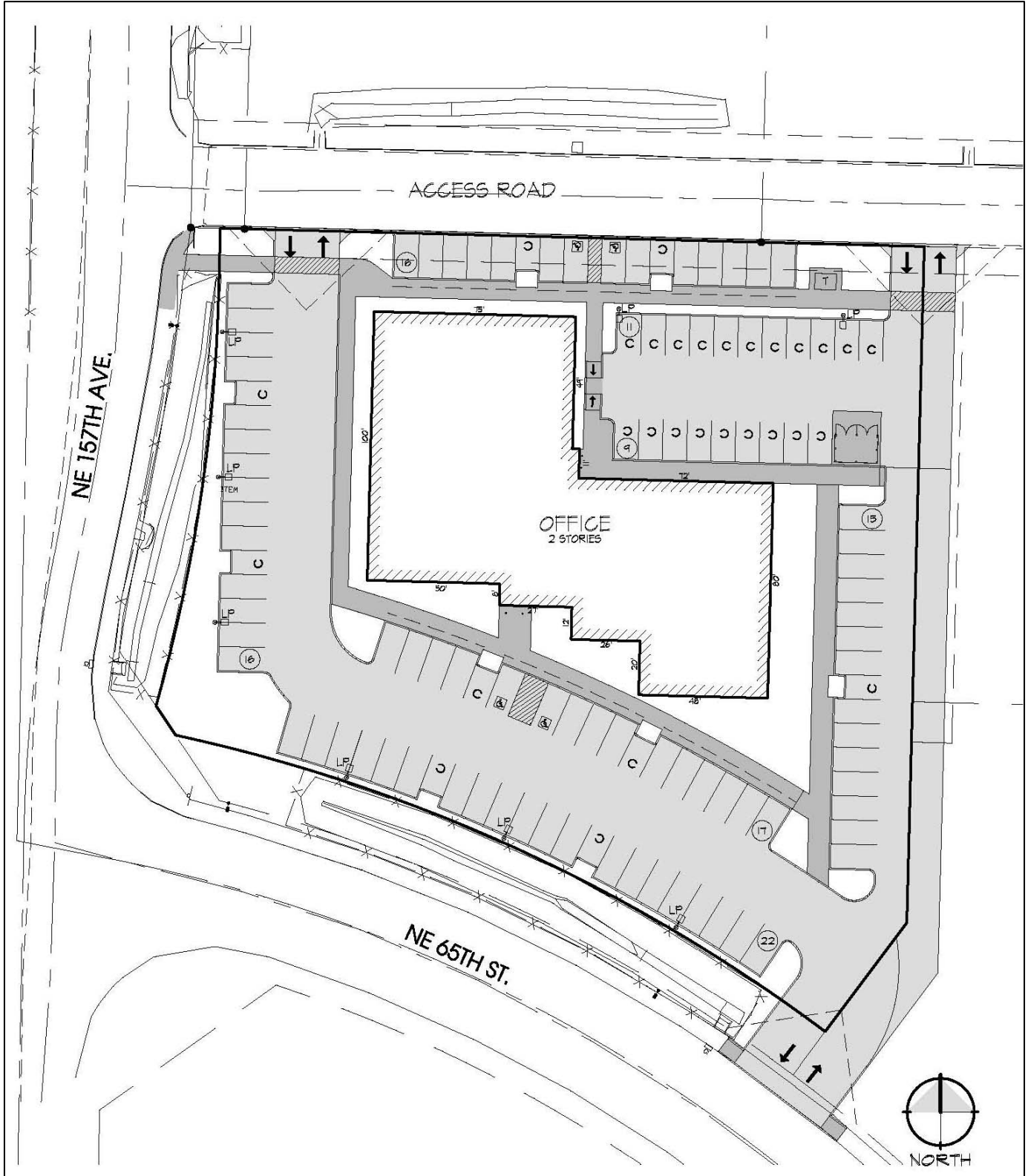
Planning Solutions, Inc.
ARCHITECTURAL AND PLANNING DOCUMENT CONSULTING LANDSCAPE ARCHITECTURE
103 BROADWAY STREET
VANCOUVER, WA 98661
PHONE 360 595-2222
FAX 360 595-2222
info@planning-solutions.com

Sifton Commerce Center
SR 500 and N.E. 162nd Avenue
Vancouver, Washington

Adam D. Roselli, CCIM • 360.750.5595 xt. 15 • aroselli@ef-inc.com
Deborah Ewing • 360.750.5595 xt. 13 • dewing@ef-inc.com
Byron Roselli • 360.750.5595 xt. 14 • broseli@ef-inc.com

Eric Fuller & Associates, Inc.
COMMERCIAL REAL ESTATE SERVICES

157TH PLAZA AT SIFTON COMMERCE CENTER VANCOUVER, WASHINGTON



Adam D. Roselli, CCIM • 360.750.5595 xt. 15 • aroselli@ef-inc.com
Deborah Ewing • 360.750.5595 xt. 13 • dewing@ef-inc.com
Byron Roselli • 360.750.5595 xt. 14 • broseli@ef-inc.com

