

Retail For Lease

SIFTON RETAIL CENTER

14020 NE Fourth Plain Road | Vancouver, WA



- Tony's Auto Parts Center
- Centrally located in busy retail corridor across from future home of Wal-Mart Super Center
- Good parking and access
- Adjacent to Kaiser Permanente Clinic
- Built-out insurance office; move-in ready.
- Available 1/1/2012



Suite C
1,200 SF
\$13.00/SF NNN



Commercial Real Estate Services, Worldwide.

Contact Information

Pam Lindloff
tel 360 852 9622

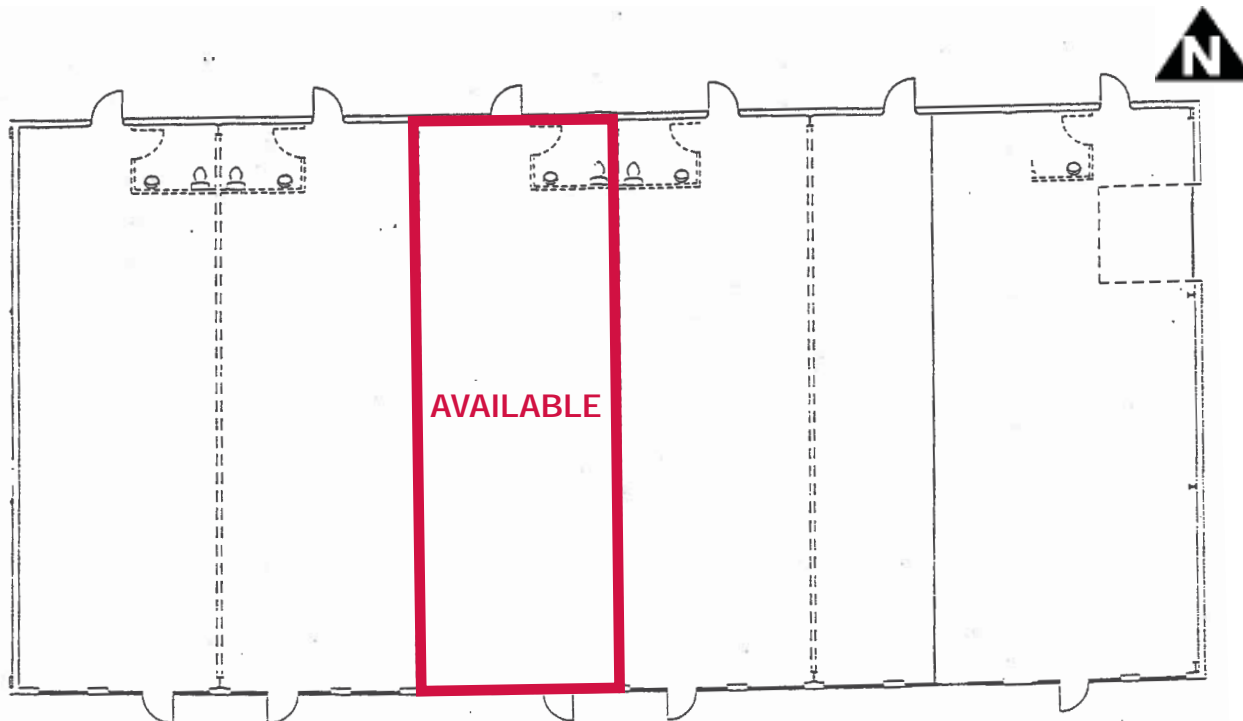
plindloff@nbsrealtors.com

The information contained herein has been obtained from sources we deem reliable. We do not, however, guarantee its accuracy. All information should be verified prior to purchase or lease.

Retail For Lease

SIFTON RETAIL CENTER

14020 NE Fourth Plain Road | Vancouver, WA



Description	0.00 - 1.00 miles Radius 1	0.00 - 3.00 miles Radius 2	0.00 - 5.00 miles Radius 3
Population			
2016 Projection	15,835	95,323	206,881
2011 Estimate	14,160	86,088	188,919
2000 Census	10,606	63,804	148,974
1990 Census	4,444	35,844	95,059
Growth 1990-2000	138.66%	78.00%	56.72%
Households			
2016 Projection	5,208	32,426	75,102
2011 Estimate	4,691	29,407	68,969
2000 Census	3,506	21,639	54,209
1990 Census	1,525	12,003	34,210
Growth 1990-2000	129.90%	80.28%	58.46%
2011 Est. Average Household Income	\$66,928	\$66,757	\$64,333

© 2011 The Nielsen Company. All rights reserved.



Commercial Real Estate Services, Worldwide.

700 Washington Street, Suite 608, Vancouver, Washington 98660 | 360.852.9600 main | www.nai-nbs.com

Contact Information

Pam Lindloff
tel 360 852 9622

plindloff@nbsrealtors.com