

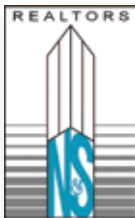
# FOR LEASE

## Whitaker Way Business Park



**W**hitaker Way Business Park is an eight-building industrial business park that offers a wide variety of availabilities ranging from incubator to office/flex to manufacturing and distribution spaces.

- All Spaces are 20' clear height & sprinklered
- Convenient access to PDX Airport, I-84, & I-205
- Multiple spaces with dock & grade loading
- Ample parking



**Norris &  
Stevens**

621 SW Morrison St., Ste. 800  
Portland, OR 97205  
503.223.3171 - Ph. / 503.228.2136 - Fx.  
[www.norris-stevens.com](http://www.norris-stevens.com)

For More Information or a Property Tour, Please Contact:

**Mike Woodley**  
[mikew@norris-stevens.com](mailto:mikew@norris-stevens.com)

Information contained herein has been obtained from others and considered to be reliable; however, a prospective purchaser or lessee is expected to verify all information to his/her own satisfaction.

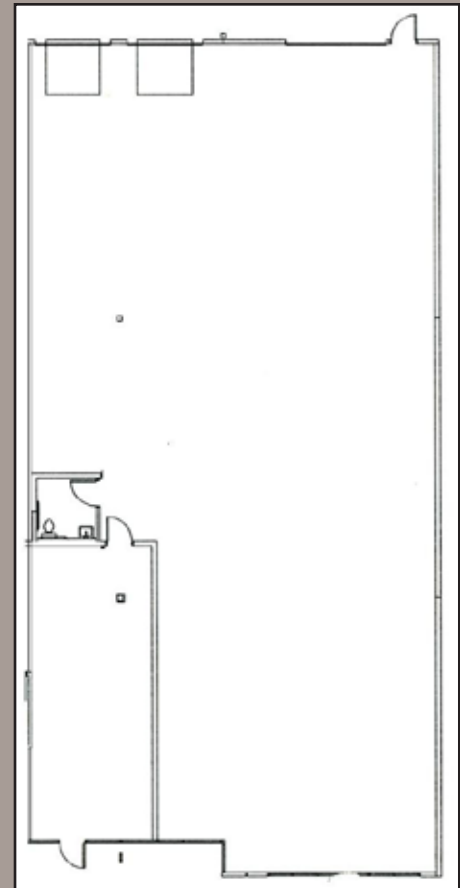
**TCN**  
WORLDWIDE

# Whitaker Way Business Park



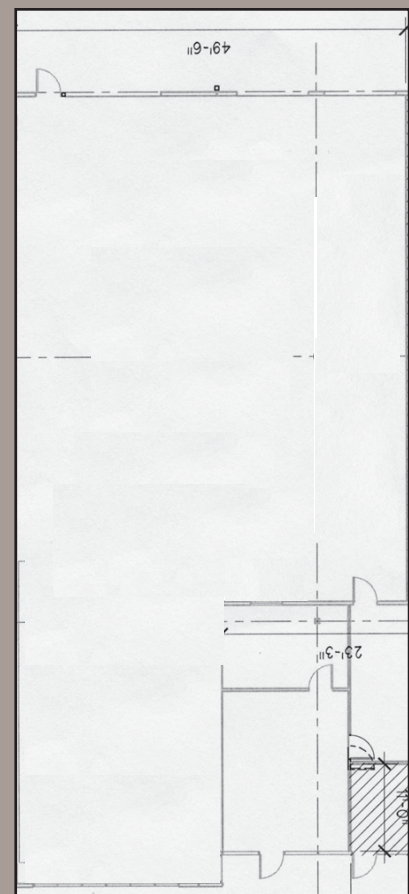
**13010 NE David Circle - Bldg. #2**

- ± 5,482 SF Shell
- ± 637 SF Office
- 1 Grade Doors | 2 Dock Doors
- End Cap - Great Visibility
- \$0.35/\$0.70 NNN



**13010 NE David Circle - Bldg. #2**

- ± 4,400 SF Shell
- ± 634 SF Office
- 1 Grade Door
- \$0.35/\$0.70 NNN

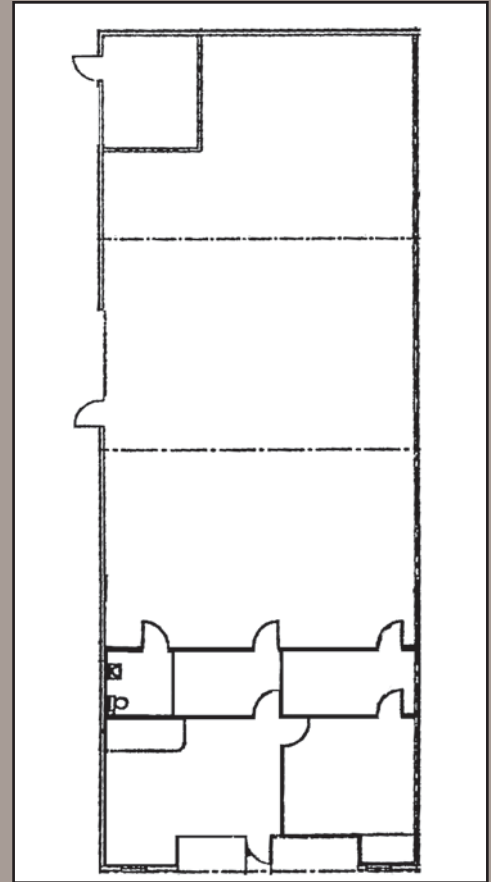


# Whitaker Way Business Park



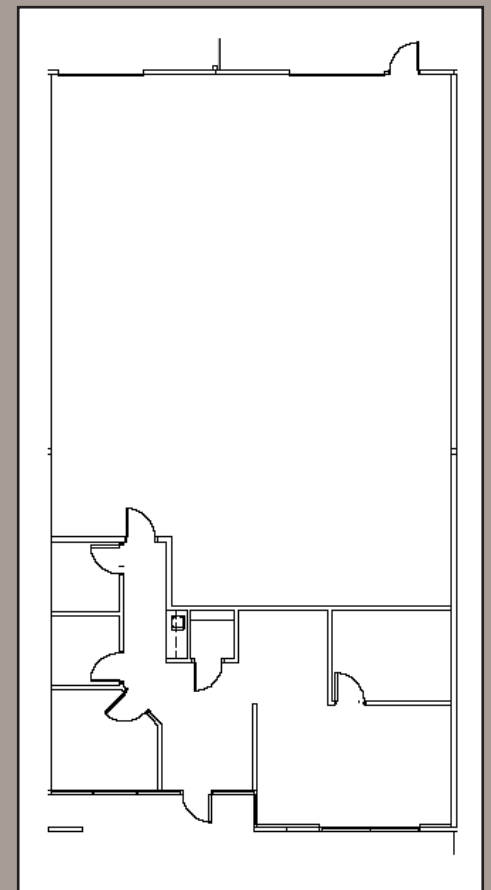
**12937 NE David Circle - Bldg. #4**

- ± 3,576 SF Shell
- ± 937 SF Office
- 1 Grade Door
- \$0.35/\$0.70 NNN



**13233 NE Whitaker Way - Bldg. #6**

- ± 3,400 SF Shell
- ± 1,004 SF Office
- 1 Dock Door | 1 Grade Door
- \$0.35/\$0.70 NNN

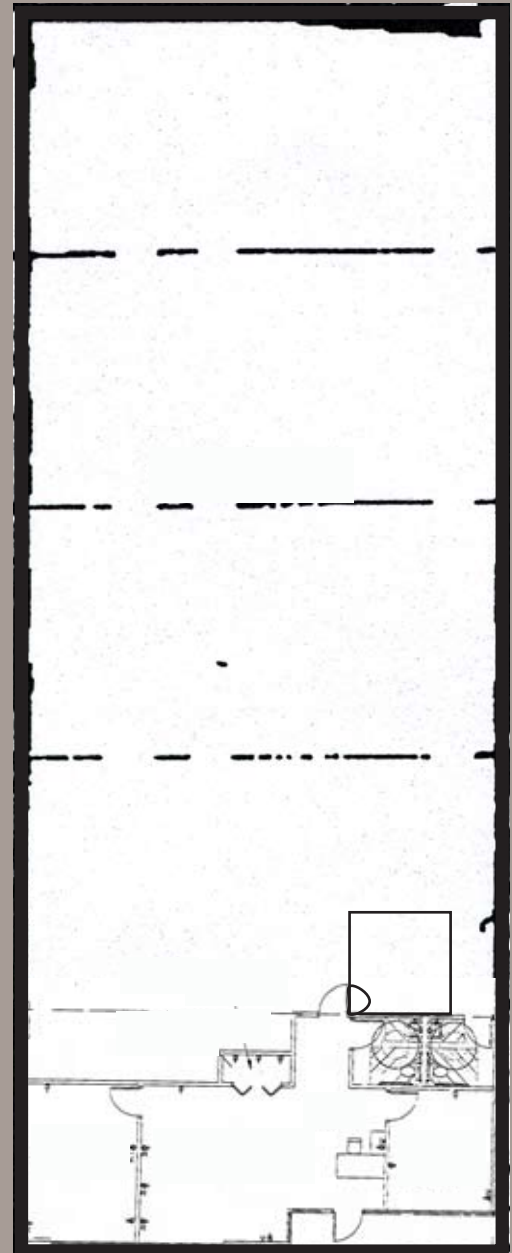


# Whitaker Way Business Park

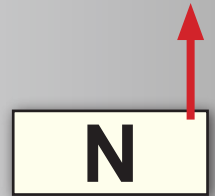


**12923 NE David Circle - Bldg. #5**

- ± 6,250 SF Shell
- ± 1,125 SF Office
- 1 Grade Door | 2 Dock Doors
- \$0.35/\$0.70 NNN



# Whitaker Way Business Park



**Norris &  
Stevens**

621 SW Morrison St., Ste. 800  
Portland, OR 97205  
503.223.3171 - Ph. / 503.228.2136 - Fx.  
www.norris-stevens.com

For More Information or a Property Tour, Please Contact:

**Mike Woodley**  
mikew@norris-stevens.com